



AUSTRALIAN BUREAU OF STATISTICS

CANBERRA

**PERSONS NOT IN THE
LABOUR FORCE
AUSTRALIA**

MARCH 1987

CATALOGUE NO. 6220.0

EMBARGOED UNTIL 11.30 A.M. 18 AUGUST 1987

PERSONS NOT IN THE LABOUR FORCE, AUSTRALIA

MARCH 1987

IAN CASTLES

Australian Statistician

AUSTRALIAN BUREAU OF STATISTICS

CATALOGUE NO. 6220.0

(F)

© Commonwealth of Australia 1987

PHONE INQUIRIES • *about these statistics*—contact Ms Sandra Martyn on Canberra (062) 52 6503 or any ABS State office.
 • *about other statistics and ABS services*—contact Information Services on Canberra (062) 52 6007, 52 6627, 52 5402 or any ABS State office.

MAIL INQUIRIES • *write to Information Services*, ABS, P.O. Box 10, Belconnen, A.C.T. 2616 or any ABS State office.

ELECTRONIC SERVICES • on VIATEL — key *656#. • on AUSSTATS — phone (062) 52 6017.
 • on TELESTATS — phone (062) 52 5404.

CONTENTS

Table	Page
.. Summary of Findings	1
.. Explanatory Notes	4
 Civilian population aged 15 and over, March 1984 to March 1987—	
1 Labour force status and sex	7
 Persons not in the labour force with marginal attachment to the labour force, March 1984 to March 1987—	
2 Sex and main reason for not actively looking for work	8
3 Summary of characteristics	9
 Discouraged jobseekers, March 1984 to March 1987—	
4 Age	9
 Persons not in the labour force—	
5 Occupation in last job, main activity and sex	10
 Persons who had had a job—	
6 Reason for ceasing last job and time since last job	11
7 Reason for ceasing last job, status of worker in last job and full-time or part-time status in last job	11
 Persons who wanted to work—	
8 Intention to look for work in the next twelve months, age and sex	12
9 Type of work preferred, age and sex	12
 Persons with marginal attachment to the labour force—	
10 Main reason for not actively looking for work, intention to look for work in the next twelve months and type of work preferred	13
11 Time since last job and whether looked for work in the last twelve months	13
12 Whether looked for work in the last twelve months, family status and sex	14
13 Type of work preferred, family status and sex	14
14 Summary of characteristics	15
 Persons who wanted to work but were not actively looking for work and were available to start work within four weeks—	
15 Main reason for not actively looking for work, age and sex	16
16 Whether looked for work in the last twelve months, intention to look for work in the next twelve months and sex	17
17 Time since last job, intention to look for work in the next twelve months and sex	17
 Discouraged jobseekers—	
18 Whether looked for work in the last twelve months, time since last job and intention to look for work in the next twelve months	18
 Persons who wanted to work but were not actively looking for work and were not available to start work within four weeks—	
19 Reason not available to start work within four weeks, intention to look for work in the next twelve months and type of work preferred	18
20 Reason not available to start work within four weeks and age	18
.. Additional Tables	19
.. Technical Note	20

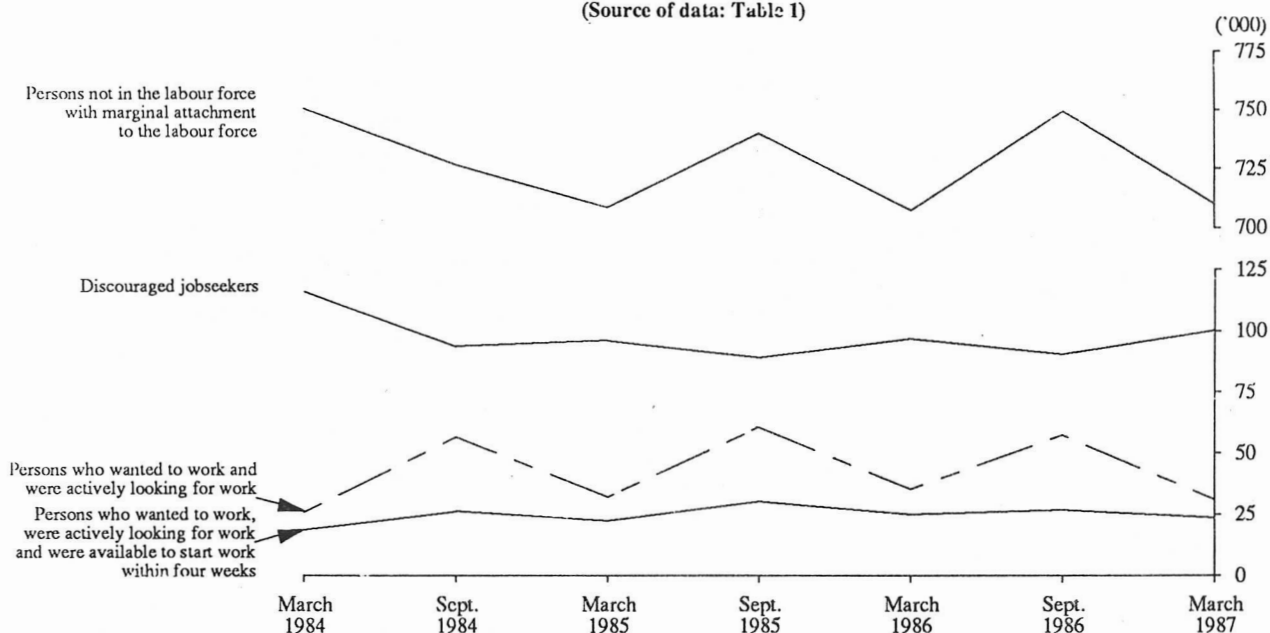
SUMMARY OF FINDINGS

In March 1987 there were an estimated 4,583,100 persons aged 15 and over and not in the labour force. These people constituted 37.0 per cent of the civilian population in the same age group compared with 38.5 per cent in March 1984.

Persons with marginal attachment to the labour force (i.e. persons not classed as employed nor unemployed, but who wanted to work and who meet certain availability criteria) represented 15.5 per cent (709,800) of persons not in the labour force — unchanged from the proportion estimated in March 1986, and consistent with the apparent seasonal pattern.

Diagram 1 illustrates this seasonal pattern in the number of persons with marginal attachment to the labour force who wanted to work and were actively looking for work. Survey estimates since March 1984 indicate that most of this seasonal change occurs in the group of persons who were actively looking for work but were not available to start work within four weeks.

DIAGRAM 1. PERSONS NOT IN THE LABOUR FORCE WITH MARGINAL ATTACHMENT TO THE LABOUR FORCE, MARCH 1984 TO MARCH 1987
(Source of data: Table 1)



In March 1987 there were 100,200 discouraged jobseekers (14.1 per cent of those with marginal attachment to the labour force). The number of discouraged jobseekers has shown little change since September 1984.

Persons not in the labour force who wanted to work

In March 1987 there were 945,300 persons not in the labour force who wanted to work, with females comprising 75.8 per cent. The 15 to 24 age group contained 27.1 per cent of the total persons wanting to work and the 25 to 34 age group contained 28.4 per cent. Generally however, as age increased there were fewer persons who wanted to work.

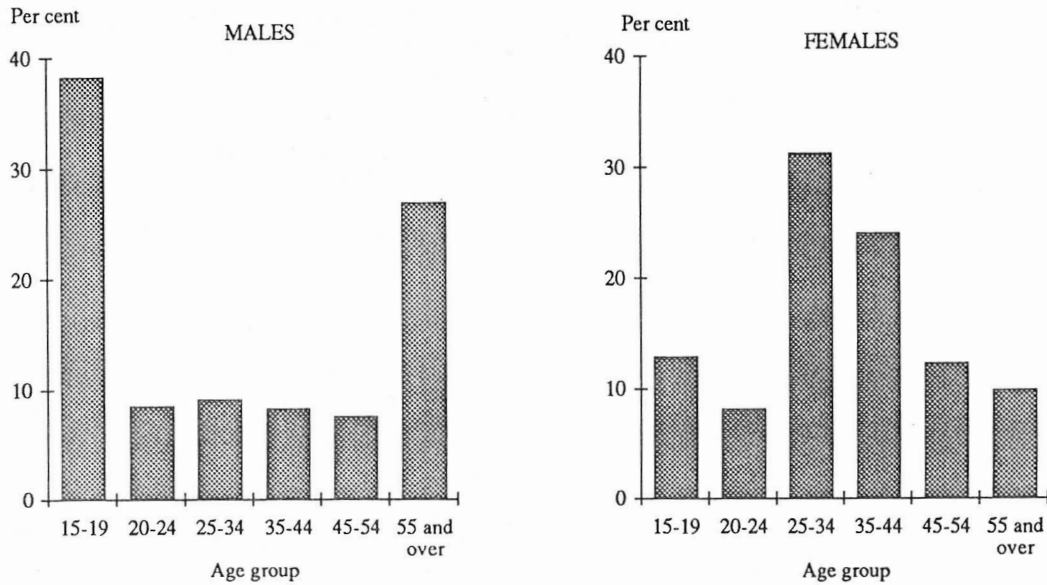
Of all persons not in the labour force who wanted to work, 24.2 per cent preferred to work full-time. This percentage was slightly higher in the 15 to 19 and 20 to 24 age groups with 36.5 per cent and 29.7 per cent respectively. The 65 and over age group contained only 11.1 per cent who preferred to work full-time.

A considerable number (235,500) of those who wanted to work were not actively looking for work and were not available to start work within four weeks. The remainder (709,800) were regarded as having marginal attachment to the labour force.

Persons not in the labour force with marginal attachment to the labour force

Females predominate among persons with marginal attachment to the labour force numbering 537,300 in March 1987, accounting for 75.7 per cent of the marginally attached. Of these females, 31.5 per cent were in the 25 to 34 age group and 24.3 per cent were in the 35 to 44 age group while 13.1 per cent were aged 15 to 19. While this distribution closely approximates the age distribution of females in the labour force, it is not the case for males. Relative to their 9.1 per cent share of the labour force, teenage males (aged 15 to 19) are over-represented among males with marginal attachment to the labour force, accounting for 38.5 per cent of that group.

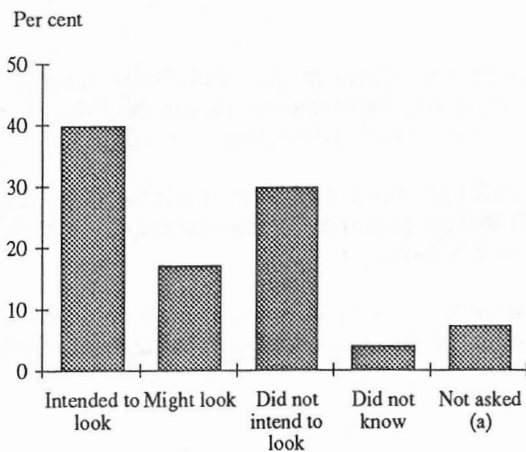
DIAGRAM 2. PERSONS NOT IN THE LABOUR FORCE WITH MARGINAL ATTACHMENT TO THE LABOUR FORCE: AGE AND SEX, MARCH 1987
(Source of data: Table 14)



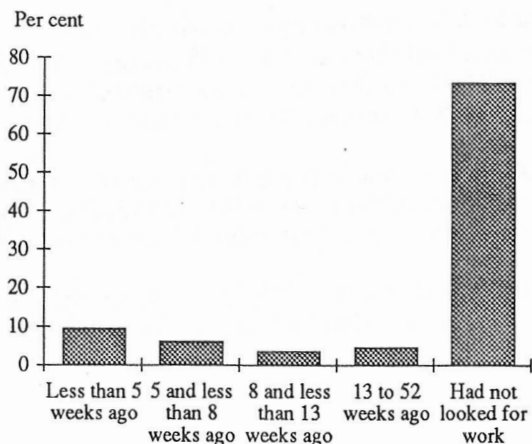
Some 57.8 per cent of persons with marginal attachment to the labour force stated that they intended to, or might look for work in the next twelve months and 30.2 per cent stated that they did not intend to look for work. Of those who intended to, or might look for work the main reasons given for not actively looking for work were 'attending an educational institution' (23.4 per cent), 'children too young or preferred to look after children' (17.0 per cent) and 'discouraged jobseekers' (15.0 per cent).

DIAGRAM 3. PERSONS NOT IN THE LABOUR FORCE WITH MARGINAL ATTACHMENT TO THE LABOUR FORCE: INTENTION TO LOOK FOR WORK IN THE NEXT TWELVE MONTHS AND WHETHER LOOKED FOR WORK IN THE LAST TWELVE MONTHS, MARCH 1987
(Source of data: Table 3)

INTENTION TO LOOK FOR WORK IN THE NEXT TWELVE MONTHS



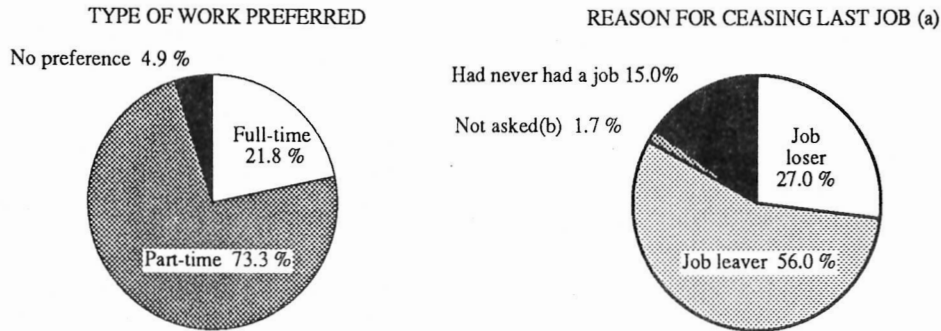
WHETHER LOOKED FOR WORK IN THE LAST TWELVE MONTHS (b)



(a) Comprises persons who had a job to go to, persons who took active steps find work and persons who had a job but, up to the end of the survey week, had been away from work without pay for four weeks or longer and had not been actively looking for work. (b) Persons who had left a job in the last twelve months were only asked whether they had looked for work since that job.

The majority of persons with marginal attachment to the labour force had not looked for work in the last twelve months (524,200 or 73.9 per cent). Of those who had looked for work in the last twelve months, 38.7 per cent (71,900) had looked less than five weeks ago, whilst 25.8 per cent (47,900) looked between five and eight weeks ago. Of the total persons who had looked for work in the last twelve months, 29.0 per cent had had their last job within twelve months and 19.7 per cent between one and three years ago.

DIAGRAM 4. PERSONS NOT IN THE LABOUR FORCE WITH MARGINAL ATTACHMENT TO THE LABOUR FORCE: TYPE OF WORK PREFERRED AND REASON FOR CEASING LAST JOB, MARCH 1987
(Source of data: Table 14)



(a) Excludes unpaid voluntary workers. (b) Persons who had a job but, up to the end of the survey week, had been away from work without pay for four weeks or longer and had not been actively looking for work.

An estimated 73.3 per cent of persons with marginal attachment to the labour force preferred to work part-time (55.3 per cent of males and 79.0 per cent of females); 21.8 per cent had a preference for full-time work; and 4.9 per cent had no preference.

Some 26.1 per cent of males and 11.5 per cent of females with marginal attachment to the labour force had never had a job. Of those who had had a job an estimated 397,800 were classed as job leavers and 192,000 as job losers. The most common reason reported by job leavers for ceasing their last job was 'pregnancy or to have children' (34.0 per cent), while the most common reason reported by job losers was 'retrenched' (39.0 per cent).

Persons not in the labour force who were discouraged jobseekers

The major reasons reported by discouraged jobseekers for not actively looking for work were 'considered too young or too old by employers' (40.3 per cent) and 'no jobs in locality or line of work' (31.4 per cent).

Amongst discouraged jobseekers, those who had looked for work in the last twelve months were highly likely to do so again, with 93.9 per cent of this group stating that they intended to look or might look for work in the next twelve months. On the other hand, of those who had not looked for work in the last twelve months only 44.3 per cent intended to look or might look for work in the next twelve months.

Some 21.8 per cent of discouraged jobseekers were in the 35 to 44 age group and 18.6 per cent in the 45 to 54 age group. The 15 to 19 age group accounted for 6.7 per cent of total discouraged jobseekers.

EXPLANATORY NOTES

Introduction

The monthly population survey (which is described in *The Labour Force, Australia* (6203.0)) comprises the monthly labour force survey and supplementary topics. This publication contains some results of a supplementary survey run in association with the March 1987 labour force survey conducted throughout Australia.

2. Of the respondents to the labour force survey, those who fell within the scope of the supplementary survey were asked additional questions. They were asked about their labour force aspirations and, if appropriate, their reasons for not actively looking for work and their availability for work.

Scope

3. The scope of this supplementary survey was the same as that used for the labour force survey (described in full in *The Labour Force, Australia* (6203.0)) except that it was restricted to persons not in the labour force.

Coverage

4. In the population survey, coverage rules are applied which aim to ensure that each person is associated with only one dwelling, and hence has only one chance of selection. See *The Labour Force, Australia* (6203.0) for more details.

Definitions

5. Unless otherwise stated, all characteristics in this publication relate to the reference week (i.e. the week before the interview).

6. Persons not in the labour force are, by definition, those persons who do not meet the criteria that would enable them to be classified as being in the labour force. To be classified as being in the labour force, a person must be aged 15 or over and be either *employed* or *unemployed*.

7. *Persons not in the labour force*, therefore, include all persons aged 15 and over who are not employed, who want to work but do not meet the criteria to be classified as unemployed; who do not want to work; or who, through incapacity or infirmity, cannot work.

8. The criteria determining those in the labour force are based on actual activity (i.e. working or looking for work) during the reference week. The criteria associated with marginal attachment to the labour force, in particular the concepts of wanting to work, reasons for not actively looking for work and availability to start work, are more subjective and are not based on the respondent's actual activity. Hence, the measurement of these criteria is affected by the respondent's own interpretation of the concepts used. An individual respondent's interpretation is affected by such factors as the respondent's work aspirations, as well as family, economic and other commitments.

9. *Persons with marginal attachment to the labour force* are those who were not in the labour force in the reference week, wanted to work and:

- (a) were actively looking for work but do not meet the criteria to be classified as unemployed; or
- (b) were not actively looking for work but were available to start work within four weeks or could start work within four weeks if childcare were available.

10. *Persons not in the labour force who wanted to work* are those who:

- (a) in the four weeks up to the end of the reference week had taken *active steps* to find work but do not meet the criteria to be classified as unemployed; or
- (b) although claiming to have looked for work in the four weeks up to the end of the reference week, had not taken *active steps* to find work; or
- (c) in the four weeks up to the end of the reference week had not looked for work but in the survey answered 'yes' or 'maybe' to the question '*Even though you have not been looking for work would you like a full-time or part-time job?*'; or
- (d) in the four weeks up to the end of the reference week had not looked for work but were responsible for children under twelve years of age and answered 'yes' or 'maybe' to the question '*If you had childcare arrangements for your child(ren) under 12, would you like a job?*'.

11. *Discouraged jobseekers* are those persons with marginal attachment to the labour force who wanted to work and were available to start work within four weeks but whose main reason for not taking active steps to find work was that they believed they would not be able to find a job for any of the following reasons: considered to be too young or too old by employers; difficulties with language or ethnic background; lacked the necessary schooling, training, skills or experience; no jobs in their locality or line of work; or no jobs at all.

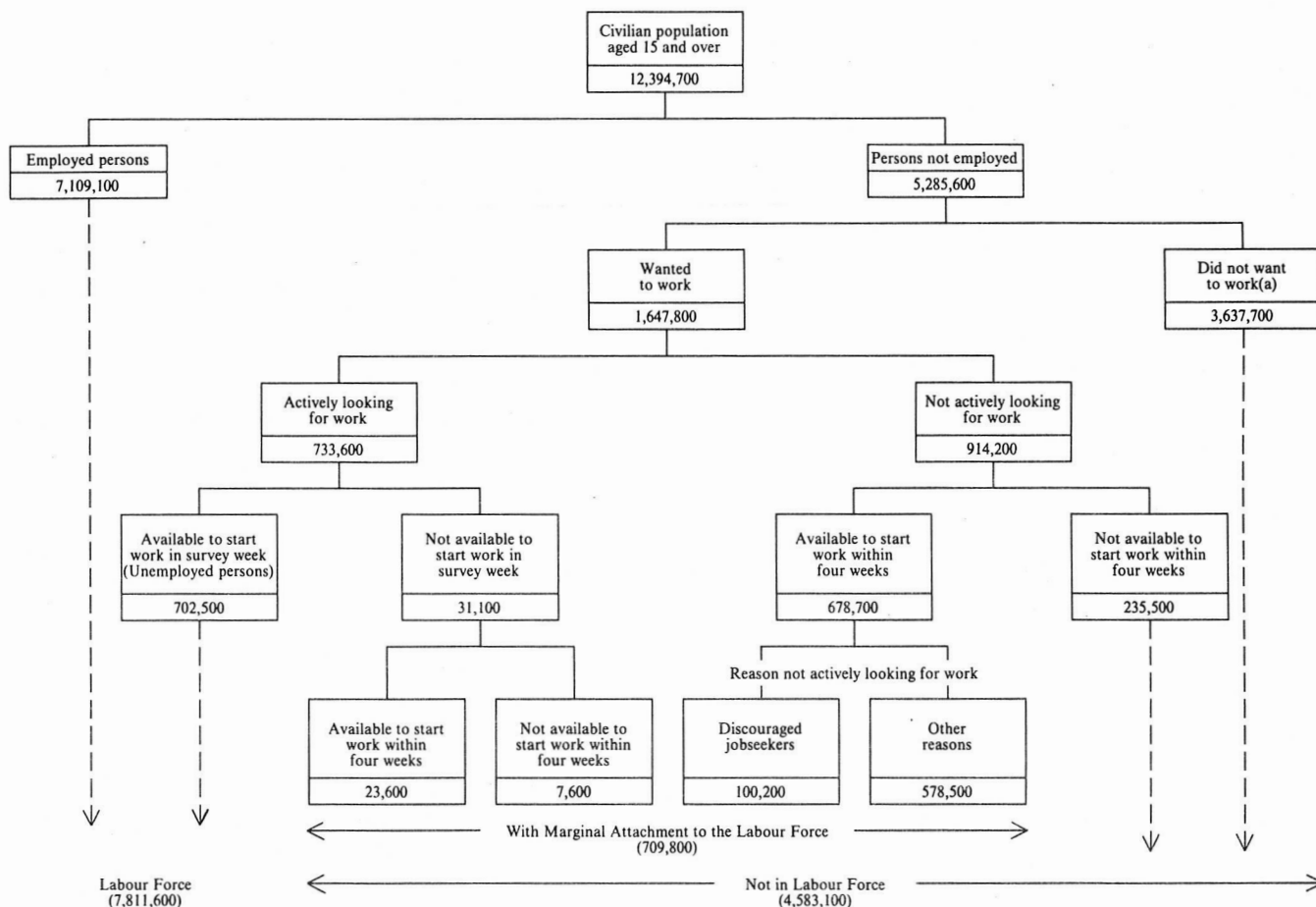
12. *Active steps taken to find work* comprise writing, telephoning or applying in person to an employer for work; answering a newspaper advertisement; checking factory or Commonwealth Employment Service noticeboards; being registered with the Commonwealth Employment Service; checking or registering with any other employment agency; advertising or tendering for work; and contacting friends or relatives.

13. A *job* is any paid employment, full-time or part-time, lasting two weeks or more.

14. Further definitions of labour force and demographic classifications appearing in this publication are given in *The Labour Force, Australia* (6203.0).

15. The various groups of persons either in the labour force or not in the labour force, including those marginally attached to the labour force, are shown schematically in the diagram on the following page.

RELATIONSHIP OF PERSONS WITH MARGINAL ATTACHMENT TO THE LABOUR FORCE TO PERSONS IN OR NOT IN THE LABOUR FORCE, MARCH 1987



(a) Includes institutionalised, boarding school pupils and persons permanently unable to work.

Results of the survey

16. Estimates of persons not in the labour force are also published in *The Labour Force, Australia* (6203.0). However, more detailed information is contained in this publication.

17. Due to differences in the method of estimation used in this supplementary survey and that used in the labour force survey, there are some small variations between estimates in this publication and those in the corresponding issue of *The Labour Force, Australia* (6203.0).

18. The estimates in this publication refer to information collected in the survey month and, due to seasonal factors, may not be representative of other months of the year.

19. Additional tables available but not included in this publication are listed on page 19. A publication (6219.0) containing a summary of the results of the survey was issued on 16 June 1987.

20. Results of similar surveys, which have been conducted each March and September since March 1979, and also in May 1977 and November 1975, have been given in previous issues of this publication.

21. It is proposed that this survey will be conducted next in March 1988.

Discontinuities in the series

22. New or amended concepts were introduced in the September 1983 survey, causing a break in series. These modifications included the addition of certain groups of persons excluded from previous *Persons Not in the Labour Force* surveys, several alterations to the order and wording of questions and several alterations to definitions used in the survey.

23. Estimates for September 1986 and March 1987 contained in this publication are based on a revised labour force questionnaire introduced in April 1986. The definition of employment was expanded resulting in a slight decrease in the estimate of persons not in the labour force. Further information is contained in *The Labour Force, Australia* (6203.0) and in an information paper *Questionnaires Used in the Labour Force Survey* (6232.0). Although estimates for previous years have not been revised in this publication, the April 1986 issue of *The Labour Force, Australia* (6203.0) contains revised estimates for persons not in the labour force back to March 1985.

24. Classification of occupation according to the Australian Standard Classification of Occupations (ASCO) 1986 was introduced in the August 1986 labour force survey, replacing the Classification and Classified List of Occupations (CCLO), used in previous surveys. The main difference between these classifications is that ASCO occupations are classified on the basis of the level and specialisation of skill required for the satisfactory performance of primary tasks. For a more detailed explanation of ASCO see the appendix to *The Labour Force, Australia, August 1986* (6203.0).

25. To provide a link between the two classifications, a matrix has been produced and is shown in Table 41 of *The Labour Force, Australia, August 1986* (6203.0). This matrix shows the relationship between ASCO and CCLO at the broadest classification level (the Major Group). The estimates in the matrix are based on a sub-sample of respondents to the May 1986 Labour Force Survey.

Reliability of the estimates

26. Estimates in this publication are subject to sampling and non-sampling errors. For further information refer to the Technical Note.

Related publications

27. Other ABS publications which may be of interest include:

The Labour Force, Australia (6203.0)—issued monthly

Labour Force Experience, Australia (6206.0)—issued annually

Underemployed Workers, Australia, May 1985 (6265.0)—issued irregularly

Job Search Experience of Unemployed Persons, Australia, June 1986 (6222.0)—issued biennially

Employment, Underemployment and Unemployment 1966-1983, Australia (6246.0)—issued irregularly

Successful and Unsuccessful Job Search Experience, Australia, June 1986 (6245.0)—issued irregularly

28. Current publications produced by the ABS are listed in the *Catalogue of Publications, Australia* (1101.0). The ABS also issues, on Tuesdays and Fridays, a *Publications Advice* (1105.0) which lists publications to be released in the next few days. The Catalogue and Publications Advice are available from any ABS office.

Symbols and other usages

- * subject to sampling variability too high for most practical uses. See the Technical Note.
- .. not applicable.

29. Because estimates have been rounded, discrepancies may occur between sums of the component items and totals.

Electronic services

30. VIATEL. Key *656# for selected current economic, social and demographic statistics.

AUSSTATS. Thousands of up-to-date time series are available on this ABS on-line service through CSIRONET.

For further information phone the AUSSTATS Help Desk on (062) 52 6017.

TELESTATS. This service provides foreign trade statistics tailored to users' requirements.

Further information is available on (062) 52 5404.

TABLE 1. CIVILIAN POPULATION AGED 15 AND OVER : LABOUR FORCE STATUS,
MARCH 1984 TO MARCH 1987
(' 000)

	March 1984	Sept. 1984	March 1985	Sept. 1985	March 1986	Sept. 1986	March 1987
MALES							
Civilian population aged 15 and over	5,768.4	5,812.3	5,856.6	5,906.0	5,968.2	6,031.5	6,103.7
Employed	4,052.3	4,059.1	4,080.8	4,166.4	4,213.0	4,237.2	4,274.1
Unemployed	404.7	376.8	389.7	341.6	352.2	362.5	385.3
Persons not in the labour force	1,311.3	1,376.5	1,386.2	1,398.0	1,403.0	1,431.8	1,444.3
With marginal attachment to the labour force	154.2	163.0	153.3	166.8	159.9	165.4	172.6
Wanted to work and were actively looking for work	12.6	29.2	14.8	24.9	14.0	26.5	12.1
Were available to start work within four weeks	9.3	10.8	10.8	9.2	10.0	9.4	10.0
Were not available to start work within four weeks	3.3	18.4	4.0	15.7	4.0	17.1	*
Wanted to work but were not actively looking for work and were available to start work within four weeks	141.6	133.8	138.5	141.9	145.8	138.9	160.4
Discouraged jobseekers	24.8	19.0	19.7	19.5	24.9	20.9	25.4
Other	116.8	114.8	118.8	122.4	120.9	118.0	135.0
Without marginal attachment to the labour force	1,157.2	1,213.5	1,232.9	1,231.2	1,243.1	1,266.4	1,271.8
Wanted to work but were not actively looking for work and were not available to start work within four weeks	48.6	67.6	50.1	72.8	64.4	68.3	56.7
Did not want to work	987.0	1,020.6	1,058.5	1,054.7	1,072.8	1,096.5	1,103.3
Permanently unable to work	31.9	33.5	32.0	27.9	31.3	31.4	26.5
Institutionalised(a) and boarding school pupils	89.5	91.7	92.3	75.9	74.5	70.2	85.4
FEMALES							
Civilian population aged 15 and over	5,950.1	5,995.7	6,040.7	6,092.4	6,153.6	6,218.0	6,291.0
Employed	2,451.9	2,513.8	2,553.7	2,617.5	2,713.3	2,770.4	2,835.0
Unemployed	296.3	244.5	282.0	246.1	288.2	269.1	317.3
Persons not in the labour force	3,201.9	3,237.4	3,205.0	3,228.9	3,152.1	3,178.5	3,138.8
With marginal attachment to the labour force	595.8	563.3	555.1	573.0	547.4	584.0	537.3
Wanted to work and were actively looking for work	13.1	27.2	17.3	35.5	21.1	30.7	19.0
Were available to start work within four weeks	9.4	15.4	11.4	20.9	14.9	17.5	13.5
Were not available to start work within four weeks	3.7	11.8	5.9	14.6	6.2	13.2	5.5
Wanted to work but were not actively looking for work and were available to start work within four weeks	582.7	536.1	537.8	537.5	526.3	553.2	518.2
Discouraged jobseekers	91.3	74.7	76.3	69.6	71.9	69.6	74.8
Other	491.4	461.5	461.5	468.0	454.4	483.6	443.5
Without marginal attachment to the labour force	2,606.0	2,674.0	2,649.9	2,655.9	2,604.7	2,594.5	2,601.5
Wanted to work but were not actively looking for work and were not available to start work within four weeks	175.3	196.4	172.6	192.4	197.0	194.4	178.9
Did not want to work	2,288.1	2,345.0	2,340.6	2,325.4	2,268.0	2,248.8	2,265.6
Permanently unable to work	20.3	23.0	22.4	19.9	19.8	25.8	20.3
Institutionalised(a) and boarding school pupils	122.3	109.6	114.3	118.2	119.9	125.6	136.8
PERSONS							
Civilian population aged 15 and over	11,718.5	11,808.0	11,897.3	11,998.5	12,121.7	12,249.5	12,394.7
Employed	6,504.2	6,572.9	6,634.5	6,783.9	6,926.3	7,007.6	7,109.1
Unemployed	701.0	621.3	671.7	587.7	640.4	631.6	702.5
Persons not in the labour force	4,513.2	4,613.8	4,591.1	4,626.9	4,555.1	4,610.3	4,583.1
With marginal attachment to the labour force	750.0	726.3	708.3	739.7	707.3	749.4	709.8
Wanted to work and were actively looking for work	25.7	56.4	32.1	60.4	35.2	57.2	31.1
Were available to start work within four weeks	18.7	26.2	22.2	30.2	25.0	26.9	23.6
Were not available to start work within four weeks	7.0	30.2	9.9	30.2	10.2	30.3	7.6
Wanted to work but were not actively looking for work and were available to start work within four weeks	724.3	669.9	676.3	679.4	672.1	692.1	678.7
Discouraged jobseekers	116.1	93.7	96.0	89.0	96.8	90.5	100.2
Other	608.2	576.2	580.3	590.4	575.3	601.6	578.5
Without marginal attachment to the labour force	3,763.3	3,887.6	3,882.8	3,887.1	3,847.8	3,860.9	3,873.3
Wanted to work but were not actively looking for work and were not available to start work within four weeks	224.0	264.1	222.7	265.2	261.4	262.7	235.5
Did not want to work	3,275.2	3,365.6	3,399.1	3,380.1	3,340.8	3,345.3	3,368.8
Permanently unable to work	52.3	56.5	54.4	47.8	51.1	57.2	46.8
Institutionalised(a) and boarding school pupils	211.8	201.4	206.6	194.1	194.4	195.8	222.1

(a) Includes some patients in hospitals and sanatoria and inmates of reformatories, gaols etc.

TABLE 2. PERSONS NOT IN THE LABOUR FORCE WITH MARGINAL ATTACHMENT TO THE LABOUR FORCE:
MAIN REASON FOR NOT ACTIVELY LOOKING FOR WORK, MARCH 1984 TO MARCH 1987
(' 000)

	March 1984	Sept. 1984	March 1985	Sept. 1985	March 1986	Sept. 1986	March 1987
MALES							
Wanted to work and were actively looking for work	12.6	29.2	14.8	24.9	14.0	26.5	12.1
Wanted to work but were not actively looking for work and were available to start work within four weeks	141.6	133.8	138.5	141.9	145.8	138.9	160.4
<i>Main reason for not actively looking for work—</i>							
Had a job to go to	3.4	*	*	*	*	*	4.9
Personal reasons	98.4	94.0	94.7	97.5	98.5	96.9	111.1
Family reasons	3.1	4.8	5.3	4.3	*	*	*
Discouraged jobseekers	24.8	19.0	19.7	19.5	24.9	20.9	25.4
No jobs in suitable hours	*	*	*	*	*	*	*
Other reasons	6.1	8.0	7.4	10.6	9.8	10.6	9.7
Did not know	*	*	*	*	*	*	*
Not asked(a)	*	*	4.6	*	*	*	*
Total	154.2	163.0	153.3	166.8	159.9	165.4	172.6
FEMALES							
Wanted to work and were actively looking for work	13.1	27.2	17.3	35.5	21.1	30.7	19.0
Wanted to work but were not actively looking for work and were available to start work within four weeks	582.7	536.1	537.8	537.5	526.3	553.2	518.2
<i>Main reason for not actively looking for work—</i>							
Had a job to go to	6.9	6.1	5.7	8.4	8.3	7.6	6.2
Personal reasons	167.1	147.8	168.8	158.7	152.5	153.0	154.6
Own ill health, physical disability, pregnancy	37.0	34.8	38.9	39.5	36.3	33.6	36.8
Attending an educational institution	52.1	46.1	54.3	50.9	57.3	55.5	58.0
Had no need to work	40.2	32.9	38.2	34.0	31.0	32.3	28.1
Give others a chance	9.9	8.2	8.5	6.0	4.0	6.4	4.9
Welfare payments/pension may be affected	15.6	13.5	17.6	14.7	14.8	12.9	15.6
Moved house/holidays	12.2	12.3	11.3	13.6	9.2	12.2	11.2
Family reasons	259.4	258.3	232.9	244.1	237.8	263.5	235.5
Ill health of other than self	9.6	14.1	8.7	13.2	12.4	11.0	11.7
Unable to find suitable childcare	210.9	75.5	72.7	71.8	69.4	71.9	67.6
Children too young/preferred to look after children	131.6	113.6	124.6	116.3	138.7	116.1	40.0
Other family considerations	38.9	37.1	37.9	34.4	39.8	42.0	40.0
Discouraged jobseekers	91.3	74.7	76.3	69.6	71.9	69.6	74.8
Considered too young or too old by employers	22.6	19.3	22.5	22.4	24.3	20.1	27.2
Difficulties with language or ethnic background	3.5	4.4	4.1	4.2	4.2	*	*
Lacked necessary schooling, training, skills or experience	8.4	7.9	10.0	7.4	9.8	8.6	10.4
No jobs in locality or line of work	34.1	23.4	27.4	21.6	22.9	27.8	24.1
No jobs at all	22.8	19.7	12.4	14.0	10.7	9.7	9.8
No jobs in suitable hours	20.8	17.4	15.8	15.6	16.4	15.4	10.7
Other reasons	22.0	21.4	22.3	25.6	24.8	30.3	19.4
Did not know	7.9	3.6	8.7	7.2	7.8	5.8	8.2
Not asked(a)	7.3	6.8	7.2	8.3	6.7	8.0	8.9
Total	595.8	563.3	555.1	573.0	547.4	584.0	537.3
PERSONS							
Wanted to work and were actively looking for work	25.7	56.4	32.1	60.4	35.2	57.2	31.1
Wanted to work but were not actively looking for work and were available to start work within four weeks	724.3	669.9	676.3	679.4	672.1	692.1	678.7
<i>Main reason for not actively looking for work—</i>							
Had a job to go to	10.3	8.8	9.1	11.2	11.7	9.9	11.1
Personal reasons	265.5	241.8	263.5	256.2	251.0	249.9	265.7
Own ill health, physical disability, pregnancy	62.2	60.6	65.8	69.1	63.0	56.5	63.7
Attending an educational institution	104.8	93.4	104.9	102.3	111.1	106.9	119.8
Had no need to work	49.5	41.5	44.7	41.3	38.2	40.0	38.9
Give others a chance	11.0	9.3	9.1	6.2	4.5	7.4	5.5
Welfare payments/pension may be affected	21.7	17.4	24.2	19.6	19.6	21.3	22.1
Moved house/holidays	16.3	19.6	14.7	17.8	14.7	17.8	15.6
Family reasons	262.5	263.1	238.2	248.4	241.4	267.3	239.3
Ill health of other than self	10.1	15.2	11.0	14.8	12.9	11.6	13.1
Unable to find suitable childcare	212.1	76.3	73.6	72.5	70.1	72.6	68.2
Children too young/preferred to look after children	132.9	115.0	126.1	117.5	140.2	117.2	40.8
Other family considerations	40.3	38.7	38.6	34.9	40.9	43.0	40.8
Discouraged jobseekers	116.1	93.7	96.0	89.0	96.8	90.5	100.2
Considered too young or too old by employers	34.5	26.9	31.0	32.2	37.6	31.3	40.4
Difficulties with language or ethnic background	3.8	5.7	4.7	5.0	5.2	4.0	4.2
Lacked necessary schooling, training, skills or experience	10.0	8.9	11.2	8.9	11.5	10.2	12.5
No jobs in locality or line of work	40.7	29.0	33.0	26.0	29.1	33.3	31.5
No jobs at all	27.1	23.2	16.1	16.8	13.4	11.7	11.6
No jobs in suitable hours	22.9	19.3	17.7	18.4	17.5	16.5	11.8
Other reasons	28.2	29.5	29.7	36.4	34.6	40.9	29.1
Did not know	9.5	4.2	10.3	8.0	9.0	6.6	9.0
Not asked(a)	9.3	9.5	11.9	12.0	10.1	10.7	12.4
Total	750.0	726.3	708.3	739.7	707.3	749.4	709.8

(a) Persons who had a job but, up to the end of the survey week, had been away from work without pay for four weeks or longer and had not been actively looking for work.

**TABLE 3. PERSONS NOT IN THE LABOUR FORCE WITH MARGINAL ATTACHMENT TO THE LABOUR FORCE:
SUMMARY OF CHARACTERISTICS, MARCH 1984 TO MARCH 1987**
(' 000)

	March 1984	Sept. 1984	March 1985	Sept. 1985	March 1986	Sept. 1986	March 1987
<i>Age group—</i>							
15-19	123.2	131.3	120.9	138.3	131.6	150.1	137.0
20-24	80.3	77.6	76.7	75.7	68.1	72.2	60.4
25-34	217.3	203.4	189.1	203.8	187.6	196.2	185.3
35-44	147.6	146.4	149.2	146.1	141.8	151.9	145.5
45-54	87.5	84.2	84.0	82.6	84.3	82.6	80.4
55-59	37.1	35.2	35.0	39.8	38.5	33.2	37.7
60-64	28.3	24.7	26.3	24.2	27.3	28.6	29.6
65 and over	28.6	23.4	27.0	29.1	27.9	34.6	34.0
<i>Time since last job—</i>							
Had had a job	640.7	609.7	606.7	612.0	596.5	621.2	602.2
Under 12 months	154.7	152.7	149.8	160.2	159.6	173.3	169.9
Under 6 months	102.9	87.4	98.9	91.7	110.7	98.0	122.4
6 and under 12 months	51.8	65.3	50.9	68.5	48.9	75.4	47.5
1 and under 3 years	148.7	135.3	126.7	119.0	111.9	116.6	118.2
3 and under 5 years	95.5	89.2	95.8	92.4	85.4	88.2	79.0
5 and under 10 years	128.6	119.4	114.8	122.3	121.9	122.0	119.4
10 and under 20 years	83.5	87.1	85.7	92.1	88.7	90.7	88.8
20 years or more	29.6	25.9	33.9	26.1	29.0	30.3	26.8
Had never had a job	109.3	116.7	101.7	127.7	110.8	128.2	106.7
<i>Whether looked for work in the last twelve months(a)—</i>							
Had looked for work	193.8	207.8	176.9	214.0	188.4	199.5	185.6
Less than 5 weeks ago	75.4	95.5	75.6	100.6	78.9	96.4	71.9
5 and less than 8 weeks ago	48.6	46.7	41.8	39.3	42.8	39.2	47.9
8 and less than 13 weeks ago	32.1	25.7	25.7	30.9	29.9	25.4	29.0
13 to 52 weeks ago	37.7	39.9	33.8	43.1	36.8	38.5	36.8
Had not looked for work	556.1	518.6	531.5	525.7	518.9	549.8	524.2
<i>Intention to look for work in the next twelve months—</i>							
Intended to look	301.3	272.9	266.1	275.6	279.6	288.4	285.9
Might look	129.1	116.1	130.3	134.8	125.1	126.3	124.2
Did not intend to look	243.4	229.6	222.8	208.5	213.4	230.2	214.1
Did not know	30.9	33.0	36.2	37.2	32.3	26.7	31.0
Not asked(b)	45.3	74.8	53.0	83.6	56.9	77.8	54.7
<i>Type of work preferred—</i>							
Full-time	164.1	176.9	162.6	179.7	149.9	176.6	155.0
Part-time	561.2	529.2	522.6	531.1	531.6	539.7	520.2
No preference	24.6	20.2	23.2	28.9	25.8	33.1	34.6
Total	750.0	726.3	708.3	739.7	707.3	749.4	709.8
Males	154.2	163.0	153.3	166.8	159.9	165.4	172.6
Females	595.8	563.3	555.1	573.0	547.4	584.0	537.3

(a) Persons who had left a job in the last twelve months were only asked whether they had looked for work since that job. (b) Comprises persons who had a job to go to, persons who took active steps to find work and persons who had a job but, up to the end of the survey week, had been away from work without pay for four weeks or longer and had not been actively looking for work.

**TABLE 4. PERSONS NOT IN THE LABOUR FORCE WHO WERE DISCOURAGED JOBSEEKERS : AGE,
MARCH 1984 TO MARCH 1987**
(' 000)

Age group	March 1984	Sept. 1984	March 1985	Sept. 1985	March 1986	Sept. 1986	March 1987
15-19	10.0	8.4	8.1	5.3	7.2	7.1	6.7
20-24	6.7	5.1	5.1	5.4	6.0	*	*
25-34	19.3	13.8	15.6	14.0	12.7	12.8	11.7
35-44	21.2	19.1	17.8	17.2	18.1	18.6	21.8
45-54	27.2	19.9	18.4	17.9	18.4	13.9	18.6
55-59	10.5	10.1	11.5	11.5	11.9	8.7	11.3
60-64	8.9	6.6	8.7	5.7	7.8	10.9	11.9
65 and over	12.3	10.7	10.7	12.0	14.7	15.6	15.2
Total	116.1	93.7	96.0	89.0	96.8	90.5	100.2

TABLE 5. PERSONS NOT IN THE LABOUR FORCE(a) : OCCUPATION IN LAST JOB AND MAIN ACTIVITY, MARCH 1987 (' 000)

Occupation in last job	Main activity							Other(b)	Total
	Home duties/ childcare	Attending educational institution	Retired/ voluntarily inactive	Own illness/ injury; own disability/ handicap	Looking after ill/ disabled person	Travel/ moving house	Worked in unpaid voluntary job		
MALES									
Last job less than 20 years ago	52.3	87.1	693.6	183.5	9.3	11.1	16.8	21.2	1,075.0
Managers and administrators	5.3	*	116.1	15.4	*	*	*	*	145.9
Professionals	*	5.9	49.2	4.8	*	*	*	*	69.2
Para-professionals	*	4.9	36.4	6.6	*	*	*	*	53.1
Tradespersons	11.7	7.0	155.3	44.9	*	*	*	*	229.5
Clerks	4.0	8.7	58.0	6.7	*	*	*	*	83.0
Salespersons and personal service workers	5.3	15.8	46.3	8.3	*	*	*	*	81.4
Plant and machine operators, and drivers	5.1	*	77.9	31.8	*	*	*	*	123.8
Labourers and related workers	16.2	40.8	154.5	65.0	*	*	*	6.8	289.1
Last job 20 or more years ago	*	*	48.3	9.3	*	*	*	*	62.1
Had never had a job	*	204.4	*	12.1	*	*	*	*	221.7
Total(c)	55.9	291.5	745.2	204.9	9.9	11.4	17.5	22.6	1,359.0
FEMALES									
Last job less than 20 years ago	1,513.8	79.1	92.5	53.0	15.3	12.8	27.0	9.4	1,802.9
Managers and administrators	75.4	*	10.1	*	*	*	*	*	94.7
Professionals	90.1	4.9	8.8	*	*	*	*	*	112.0
Para-professionals	64.4	*	6.7	*	*	*	*	*	79.8
Tradespersons	79.8	*	*	*	*	*	*	*	92.2
Clerks	388.1	16.7	19.5	10.6	*	*	7.2	*	450.9
Salespersons and personal service workers	358.1	37.0	19.1	11.2	*	*	5.7	*	440.0
Plant and machine operators, and drivers	107.9	*	*	5.7	*	*	*	*	121.1
Labourers and related workers	349.9	13.1	21.7	15.6	*	*	4.8	*	412.3
Last job 20 or more years ago	635.3	*	65.7	30.0	6.7	*	13.1	*	754.7
Had never had a job	206.2	196.5	17.5	16.2	*	*	*	*	442.2
Total(c)	2,357.1	276.5	175.8	99.2	23.1	14.6	43.7	12.0	3,002.0
PERSONS									
Last job less than 20 years ago	1,566.1	166.2	786.2	236.5	24.7	23.9	43.9	30.5	2,877.9
Managers and administrators	80.7	*	126.2	17.6	*	*	5.3	*	240.6
Professionals	92.5	10.8	58.1	6.6	*	*	7.2	*	181.3
Para-professionals	66.6	7.5	43.1	9.0	*	*	*	*	132.9
Tradespersons	91.5	7.9	158.9	48.4	*	*	*	4.4	321.6
Clerks	392.1	25.4	77.5	17.3	4.4	*	9.6	*	533.9
Salespersons and personal service workers	363.4	52.9	65.4	19.5	*	4.9	7.2	4.7	521.4
Plant and machine operators, and drivers	113.1	5.6	80.8	37.5	*	*	*	*	244.9
Labourers and related workers	366.1	53.9	176.2	80.6	4.8	*	7.5	8.7	701.4
Last job 20 or more years ago	638.4	*	114.1	39.3	7.3	*	13.2	*	816.7
Had never had a job	206.6	400.9	20.8	28.4	*	*	*	*	663.9
Total(c)	2,413.0	568.0	921.0	304.2	33.0	26.0	61.2	34.6	4,361.0

(a) Excludes students boarding at school, some patients in hospitals and sanatoria and inmates of reformatories, gaols, etc. (b) Includes unpaid leave. (c) Includes unpaid voluntary workers.

TABLE 6. PERSONS NOT IN THE LABOUR FORCE WHO HAD HAD A JOB : REASON FOR CEASING LAST JOB AND TIME SINCE LAST JOB, MARCH 1987
(' 000)

Reason for ceasing last job	Time since last job							Total
	Under 6 months	6 and under 12 months	1 and under 3 years	3 and under 5 years	5 and under 10 years	10 and under 20 years	20 years or more	
Job loser	104.5	66.7	162.9	139.6	222.2	192.2	81.0	969.2
Retrenched	33.7	15.8	43.1	37.3	56.8	43.0	20.3	250.1
Job was temporary or seasonal and did not leave to return to studies	39.6	22.3	23.5	13.8	16.0	16.9	11.3	143.3
Own ill health or injury	27.9	26.3	88.6	83.6	142.1	123.6	45.9	538.0
Business closed down for economic reasons	*	*	7.8	4.9	7.4	8.7	*	37.8
Job leaver	202.6	99.4	292.1	264.7	519.6	582.9	735.7	2,697.0
Unsatisfactory work arrangements	16.5	7.7	12.9	10.9	12.5	8.4	*	71.0
Job was temporary or seasonal and left to return to studies	25.6	*	7.6	*	*	*	*	38.2
Retired/didn't want to work any longer	32.9	34.8	117.2	129.9	291.5	328.6	137.2	1,072.1
Returned to studies	52.9	7.3	13.0	*	*	*	*	78.6
To get married	*	*	5.0	7.5	23.8	46.9	394.5	480.6
Pregnancy/to have children	26.8	23.7	73.8	62.7	100.1	101.3	89.0	477.4
To look after family, house or someone else	10.3	6.6	23.5	17.1	34.9	46.4	75.5	214.3
To have holiday/to move house/spouse transferred	21.2	8.8	22.6	22.8	35.2	34.3	21.7	166.5
Business closed down for other reasons	7.8	*	8.4	4.6	11.3	10.2	6.5	51.5
Other	7.0	*	8.2	4.7	8.3	6.0	8.9	46.8
Not asked(a)	28.4	*	*	*	*	*	*	28.4
Total	335.5	166.1	455.0	404.3	741.8	775.2	816.7	(b)3,697.0
Males	129.6	55.1	162.5	164.9	299.6	263.2	62.1	(b)1,137.3
Females	205.9	111.0	292.5	239.4	442.2	511.9	754.7	(b)2,559.8

(a) Persons who had a job but, up to the end of the survey week, had been away from work without pay for four weeks or longer and had not been actively looking for work.
(b) Includes unpaid voluntary workers.

TABLE 7. PERSONS NOT IN THE LABOUR FORCE WHO HAD HAD A JOB : REASON FOR CEASING LAST JOB, STATUS OF WORKER IN LAST JOB AND FULL-TIME OR PART-TIME STATUS IN LAST JOB, MARCH 1987
(' 000)

Reason for ceasing last job	Last job less than 20 years ago							Last job 20 or more years ago	Total
	Status of worker in last job				Full-time or part-time status in last job				
	Em- ployers	Self- em- ployed	Wage and salary earners	Unpaid family helpers	Full- time	Part- time	Varied/ did not know		
Job loser	27.5	55.3	802.9	*	612.6	266.2	9.5	81.0	969.2
Retrenched	*	4.9	221.4	*	137.5	90.7	*	20.3	250.1
Job was temporary or seasonal and did not leave to return to studies	*	*	127.4	*	50.3	78.4	*	11.3	143.3
Own ill health or injury	17.9	34.4	439.1	*	401.5	86.7	*	45.9	538.0
Business closed down for economic reasons	5.9	13.1	15.1	*	23.3	10.4	*	*	37.8
Job leaver	73.1	121.2	1,763.5	*	1,461.2	485.6	14.6	735.7	2,697.0
Unsatisfactory work arrangements	*	*	66.4	*	37.8	30.6	*	*	71.0
Job was temporary or seasonal and left to return to studies	*	*	38.2	*	19.7	17.8	*	*	38.2
Retired/didn't want to work any longer	52.1	82.4	798.7	*	763.5	167.1	4.2	137.2	1,072.1
Returned to studies	*	*	77.6	*	45.2	32.2	*	*	78.6
To get married	*	*	84.2	*	76.2	9.5	*	394.5	480.6
Pregnancy/to have children	*	*	381.8	*	296.2	90.1	*	89.0	477.4
To look after family, house or someone else	4.1	7.4	126.9	*	81.1	55.7	*	75.5	214.3
To have holiday/to move house/spouse transferred	*	5.3	138.4	*	85.4	57.0	*	21.7	166.5
Business closed down for other reasons	10.1	17.1	17.3	*	32.4	12.1	*	6.5	51.5
Other	*	*	34.0	*	23.7	13.6	*	8.9	46.8
Not asked(a)	*	*	28.4	*	18.3	9.1	*	*	28.4
Total	100.6	176.5	2,594.8	6.0	2,092.0	760.8	25.1	816.7	(b)3,697.0
Males	51.7	101.6	920.8	*	963.1	106.7	5.2	62.1	(b)1,137.3
Females	48.9	74.9	1,674.1	5.1	1,128.9	654.1	19.9	754.7	(b)2,559.8

(a) Persons who had a job but, up to the end of the survey week, had been away from work without pay for four weeks or longer and had not been actively looking for work.
(b) Includes unpaid voluntary workers.

TABLE 8. PERSONS NOT IN THE LABOUR FORCE WHO WANTED TO WORK : INTENTION TO LOOK FOR WORK IN THE NEXT TWELVE MONTHS AND AGE, MARCH 1987
(' 000)

<i>Intention to look for work in the next twelve months</i>	<i>Age group</i>								<i>Total</i>
	<i>15-19</i>	<i>20-24</i>	<i>25-34</i>	<i>35-44</i>	<i>45-54</i>	<i>55-59</i>	<i>60-64</i>	<i>65 and over</i>	
MALES									
Intended to look	50.7	11.9	10.8	8.2	7.9	4.8	4.7	*	102.7
Might look	11.5	*	*	4.3	4.5	*	5.6		35.2
Did not intend to look	14.1	*	*	4.0	6.0	5.3	10.7	17.1	61.6
Did not know	*	*	*	*	*	*	*	*	6.8
Not asked(a)	4.2	*	5.2	4.3	4.0		*	*	23.0
Total	82.2	19.3	23.3	21.6	22.9	15.4	21.0	23.5	229.2
FEMALES									
Intended to look	52.4	25.8	75.3	57.9	23.4	8.2	*	*	245.3
Might look	10.4	10.4	41.0	36.8	18.4	5.7	5.8		128.4
Did not intend to look	16.3	21.2	97.4	51.5	32.2	15.3	11.8	14.6	260.2
Did not know	6.9		10.2	8.9	5.7	*	*	*	34.5
Not asked(a)	5.3	5.9	21.4	10.6	*	*	*	*	47.7
Total	87.7	66.8	245.2	165.7	82.4	32.3	17.7	18.2	716.1
PERSONS									
Intended to look	103.1	37.7	86.1	66.1	31.3	13.0	6.0	4.6	348.0
Might look	21.9	12.7	44.3	41.2	22.8	9.4	7.4	4.0	163.6
Did not intend to look	30.3	22.4	100.6	55.5	38.2	20.5	22.4	31.8	321.8
Did not know	5.2	4.1	10.9	9.7	7.6	*	*	*	41.3
Not asked(a)	9.5	9.3	26.6	14.8	5.3	*	*	*	70.7
Total	170.0	86.2	268.5	187.3	105.3	47.7	38.8	41.6	945.3

(a) Comprises persons who had a job to go to, persons who took active steps to find work and persons who had a job but, up to the end of the survey week, had been away from work without pay for four weeks or longer and had not been actively looking for work.

TABLE 9. PERSONS NOT IN THE LABOUR FORCE WHO WANTED TO WORK : TYPE OF WORK PREFERRED AND AGE, MARCH 1987
(' 000)

<i>Type of work preferred</i>	<i>Age group</i>								<i>Total</i>
	<i>15-19</i>	<i>20-24</i>	<i>25-34</i>	<i>35-44</i>	<i>45-54</i>	<i>55-59</i>	<i>60-64</i>	<i>65 and over</i>	
MALES									
Full-time	32.4	11.2	15.2	15.0	12.5	5.5	5.3	*	99.5
Part-time	48.4	7.5	6.1	6.1	7.0	7.9	13.3	18.6	114.8
No preference	*	*	*	*	5.4		4.7		14.9
Total	82.2	19.3	23.3	21.6	22.9	15.4	21.0	23.5	229.2
FEMALES									
Full-time	29.7	14.4	38.0	28.4	11.9	*	*	*	129.2
Part-time	55.2	49.3	196.9	127.8	66.8	26.7	15.1	15.4	553.3
No preference	5.9		10.3	9.5	5.7		*	*	33.7
Total	87.7	66.8	245.2	165.7	82.4	32.3	17.7	18.2	716.1
PERSONS									
Full-time	62.1	25.6	53.1	43.3	24.4	9.2	6.4	4.6	228.7
Part-time	103.6	56.8	203.0	133.9	73.8	34.6	28.4	34.1	668.1
No preference	4.3	*	12.3	10.1	7.0	4.0	4.0	*	48.5
Total	170.0	86.2	268.5	187.3	105.3	47.7	38.8	41.6	945.3

TABLE 10. PERSONS NOT IN THE LABOUR FORCE WITH MARGINAL ATTACHMENT TO THE LABOUR FORCE: MAIN REASON FOR NOT ACTIVELY LOOKING FOR WORK, INTENTION TO LOOK FOR WORK IN THE NEXT TWELVE MONTHS AND TYPE OF WORK PREFERRED, MARCH 1987 (' 000)

	<i>Intention to look for work in the next twelve months</i>					<i>Type of work preferred</i>			<i>Total</i>
	<i>Intended to look</i>	<i>Might look</i>	<i>Did not intend to look</i>	<i>Did not know</i>	<i>Not asked(a)</i>	<i>Full-time</i>	<i>Part-time</i>	<i>No preference</i>	
Wanted to work and were actively looking for work	31.1	14.6	15.8	*	31.1
Were available to start work within four weeks	23.6	11.4	11.7	*	23.6
Were not available to start work within four weeks	7.6	*	4.1	*	7.6
Wanted to work but were not actively looking for work and were available to start work within four weeks	285.9	124.2	214.1	31.0	23.5	140.4	504.4	33.8	678.7
<i>Main reason for not actively looking for work—</i>									
Had a job to go to	11.1	5.2	5.4	*	11.1
Personal reasons	130.9	44.9	79.9	10.1	..	64.8	191.1	9.8	265.7
Own ill health, physical disability, pregnancy	25.5	12.7	22.8	*	..	16.0	43.9	*	63.7
Attending an educational institution	79.0	17.0	21.1	*	..	35.2	83.1	*	119.8
Had no need to work	8.4	7.1	20.7	*	..	*	34.1	*	38.9
Give others a chance	*	*	*	*	..	*	4.9	*	5.5
Welfare payments/pension may be affected	*	5.8	11.2	*	..	4.3	16.4	*	22.1
Moved house/holidays	13.7	*	*	*	..	5.8	8.7	*	15.6
Family reasons	81.0	53.6	90.4	14.3	..	28.7	202.1	8.5	239.3
Ill health of other than self	4.9	*	4.7	*	..	*	10.5	*	13.1
Unable to find suitable childcare	17.7	12.7	34.2	*	..	9.0	56.4	*	68.2
Children too young/preferred to look after children	41.9	27.9	41.1	6.4	..	12.2	101.0	4.0	117.2
Other family considerations	16.6	10.4	10.4	*	..	5.0	34.2	*	40.8
Discouraged jobseekers	44.5	16.9	34.8	*	..	25.1	65.1	10.0	100.2
Considered too young or too old by employers	10.6	6.9	21.4	*	..	6.5	30.4	*	40.4
Difficulties with language or ethnic background	*	*	*	*	..	*	*	*	4.2
Lacked necessary schooling, training, skills or experience	6.8	*	*	*	..	4.5	6.1	*	12.5
No jobs in locality or line of work	16.8	5.9	7.2	*	..	9.7	18.7	*	31.5
No jobs at all	7.6	*	*	*	..	*	7.3	*	11.6
No jobs in suitable hours	7.3	*	*	*	..	*	10.9	*	11.8
Other reasons	17.7	5.0	5.4	*	..	8.6	18.5	*	29.1
Did not know	4.6	*	*	*	..	*	5.7	*	9.0
Not asked(b)	12.4	5.3	5.6	*	12.4
Total	285.9	124.2	214.1	31.0	54.7	155.0	520.2	34.6	709.8

(a) Comprises persons who had a job to go to, persons who took active steps to find work and persons as defined in footnote (b). (b) Persons who had a job but, up to the end of the survey week, had been away from work without pay for four weeks or longer and had not been actively looking for work.

TABLE 11. PERSONS NOT IN THE LABOUR FORCE WITH MARGINAL ATTACHMENT TO THE LABOUR FORCE: TIME SINCE LAST JOB AND WHETHER LOOKED FOR WORK IN THE LAST TWELVE MONTHS(a), MARCH 1987 (' 000)

<i>Time since last job</i>	<i>Had looked for work in the last 12 months</i>					<i>Total</i>	<i>Had not looked for work in the last 12 months</i>	<i>Total</i>
	<i>Less than 5 weeks ago</i>	<i>5 and less than 8 weeks ago</i>	<i>8 and less than 13 weeks ago</i>	<i>13 to 52 weeks ago</i>	<i>Total</i>			
Had had a job	61.8	36.7	22.5	29.9	150.9	451.2	602.2	
Under 12 months	29.7	14.4	6.5	*	53.9	116.0	169.9	
Under 6 months	21.9	10.0		5.1	37.0	85.4	122.4	
6 and under 12 months	7.8	4.4		4.6	16.9	30.6	47.5	
1 and under 3 years	10.7	9.4	5.6	10.9	36.6	81.6	118.2	
3 and under 5 years	5.8	5.3		7.7	18.8	60.3	79.0	
5 and under 10 years	8.9	4.9	*	5.2	22.4	97.0	119.4	
10 and under 20 years	6.0	*	*	6.0	17.1	71.8	88.8	
20 years or more	*	*	*	*	*	24.6	26.8	
Had never had a job	10.2	11.0	6.5	6.9	34.6	72.1	106.7	
Total (b)	71.9	47.9	29.0	36.8	185.6	524.2	709.8	

(a) Persons who had left a job in the last twelve months were only asked whether they had looked for work since that job. (b) Includes unpaid voluntary workers.

TABLE 12. PERSONS NOT IN THE LABOUR FORCE WITH MARGINAL ATTACHMENT TO THE LABOUR FORCE : WHETHER LOOKED FOR WORK IN THE LAST TWELVE MONTHS AND FAMILY STATUS, MARCH 1987 (' 000)

Whether looked for work in the last twelve months(a)	Family status										Total
	Member of a family										
	Husband or wife			Not-married family head	Full-time student aged 15-24(b)	Other child of family head	Other relative of family head	Total	Not a member of a family	Family status not determined	
	With dependents present	Without dependents present	Total								
MALES											
Had looked for work	9.9	8.8	18.7	*	20.0	5.7	*	46.6	6.3	4.4	57.4
Less than 5 weeks ago	4.0	4.5	8.5	*	6.3	*	*	18.7	} 4.8 {	*	24.2
5 and less than 8 weeks ago	*	*	4.6	*	6.4	*	*	13.0		*	15.8
8 and less than 13 weeks ago	*	*	} 5.5 {	*	} 7.3 {	*	*	6.6		*	8.0
13 to 52 weeks ago	*	*		*		*	8.3	*		9.4	
Had not looked for work	12.1	30.1	42.2	*	41.7	6.3	*	93.1	15.8	6.3	115.2
Total	22.0	38.9	60.9	*	61.6	12.0	*	139.7	22.2	10.7	172.6
FEMALES											
Had looked for work	57.0	14.6	71.6	18.3	18.3	6.7	*	115.7	6.8	5.7	128.3
Less than 5 weeks ago	22.9	4.3	27.2	6.4	4.6	} 6.0 {	*	43.0	} 5.4 {	*	47.7
5 and less than 8 weeks ago	11.6	*	15.0	4.2	6.6		*	27.9		*	32.0
8 and less than 13 weeks ago	9.4	*	12.2	*	} 7.1 {		*	18.9		*	21.0
13 to 52 weeks ago	13.1	4.1	17.2	4.8			*	*		25.9	*
Had not looked for work	204.6	60.0	264.6	59.4	34.9	*	*	365.3	21.0	22.7	409.0
Total	261.6	74.7	336.2	77.7	53.2	10.2	*	481.0	27.8	28.4	537.3
PERSONS											
Had looked for work	66.9	23.4	90.2	19.7	38.3	12.4	*	162.3	13.2	10.1	185.6
Less than 5 weeks ago	26.9	8.8	35.7	7.2	11.0	6.4	*	61.7	6.4	3.8	71.9
5 and less than 8 weeks ago	14.5	5.1	19.6	4.4	13.0	*	*	40.9	*	*	47.9
8 and less than 13 weeks ago	10.5	*	14.4	*	7.4	*	*	25.5	*	*	29.0
13 to 52 weeks ago	15.0	5.5	20.5	4.8	6.9	*	*	34.3	*	*	36.8
Had not looked for work	216.7	90.2	306.9	61.9	76.6	9.8	*	458.4	36.8	29.0	524.2
Total	283.6	113.5	397.1	81.5	114.8	22.2	5.1	620.8	50.0	39.1	709.8

(a) Persons who had left a job in the last twelve months were only asked whether they had looked for work since that job. (b) Excludes persons aged 20-24 attending school.

TABLE 13. PERSONS NOT IN THE LABOUR FORCE WITH MARGINAL ATTACHMENT TO THE LABOUR FORCE : TYPE OF WORK PREFERRED AND FAMILY STATUS, MARCH 1987 (' 000)

Type of work preferred	Family status										Total
	Member of a family										
	Husband or wife			Not-married family head	Full-time student aged 15-24(b)	Other child of family head	Other relative of family head	Total	Not a member of a family	Family status not determined	
	With dependents present	Without dependents present	Total								
MALES											
Full-time	14.1	9.9	24.0	*	19.4	7.9	*	54.3	7.8	5.4	67.5
Part-time	6.5	25.8	32.3	*	41.5	*	*	78.4	12.3	4.9	95.5
No preference	*	*	4.6	*	*	*	*	7.0	*	*	9.5
Total	22.0	38.9	60.9	*	61.6	12.0	*	139.7	22.2	10.7	172.6
FEMALES											
Full-time	28.0	8.6	36.6	18.3	14.2	7.7	*	78.1	5.4	4.0	87.5
Part-time	223.0	60.7	283.8	54.5	38.3	*	*	380.7	21.7	22.2	424.6
No preference	10.6	5.3	15.8	4.9	*	*	*	22.2	*	*	25.1
Total	261.6	74.7	336.2	77.7	53.2	10.2	*	481.0	27.8	28.4	537.3
PERSONS											
Full-time	42.1	18.5	60.6	20.2	33.6	15.7	*	132.4	13.2	9.4	155.0
Part-time	229.5	86.5	316.1	56.3	79.8	4.8	*	459.1	34.0	27.1	520.2
No preference	12.0	8.5	20.5	5.1	*	*	*	29.3	*	*	34.6
Total	283.6	113.5	397.1	81.5	114.8	22.2	5.1	620.8	50.0	39.1	709.8

(a) Excludes persons aged 20-24 attending school.

TABLE 14. PERSONS NOT IN THE LABOUR FORCE WITH MARGINAL ATTACHMENT TO THE LABOUR FORCE : SUMMARY OF CHARACTERISTICS, MARCH 1987
(' 000)

	<i>Persons who wanted to work and were actively looking for work</i>			<i>Persons who wanted to work but were not actively looking for work and were available to start work within four weeks</i>			<i>Persons with marginal attachment to the labour force</i>		
	<i>Were available to start work within four weeks</i>	<i>Were not available to start work within four weeks</i>	<i>Total</i>	<i>Discouraged job-seekers</i>	<i>Other</i>	<i>Total</i>	<i>Males</i>	<i>Females</i>	<i>Persons</i>
<i>Age group—</i>									
15-19	4.9	*	7.3	6.7	123.0	129.7	66.5	70.5	137.0
20-24	*	*	4.3	*	52.9	56.1	15.0	45.3	60.4
25-34	7.7	*	8.7	11.7	164.8	176.5	16.1	169.1	185.3
35-44	4.5	*	6.6	21.8	117.2	139.0	14.7	130.8	145.5
45-54	*	*	*	18.6	60.3	78.9	13.4	67.0	80.4
55-59	*	*	*	11.3	24.9	36.1	10.7	27.0	37.7
60-64	*	*	*	11.9	16.5	28.4	16.4	13.2	29.6
65 and over	*	*	*	15.2	18.8	34.0	19.7	14.3	34.0
<i>Family status—</i>									
Member of a family	17.9	6.4	24.4	80.7	515.7	596.4	139.7	481.0	620.8
Husband or wife	9.1	*	11.6	59.8	325.7	385.5	60.9	336.2	397.1
With dependents present	6.6	*	8.5	27.6	247.4	275.1	22.0	261.6	283.6
Without dependents present	*	*	*	32.2	78.3	110.5	38.9	74.7	113.5
Not-married family head	*	*	*	11.7	66.5	78.2	*	77.7	81.5
With dependents present	*	*	*	7.7	61.3	69.0	*	69.5	72.2
Without dependents present	*	*	*	4.0	5.2	9.2	*	8.2	9.4
Full-time student aged 15-24(a)	*	*	4.1	4.2	106.5	110.8	61.6	53.2	114.8
Other child of family head	*	*	4.1	*	14.8	18.0	12.0	10.2	22.2
Other relative of family head	*	*	*	*	*	*	*	*	5.1
Not a member of a family	*	*	4.2	13.4	32.4	45.7	22.2	27.8	50.0
Living alone	*	*	*	11.4	19.1	30.5	13.5	18.6	32.1
Not living alone	*	*	*	*	13.3	15.2	8.7	9.2	17.9
Family status not determined	*	*	*	6.1	30.5	36.5	10.7	28.4	39.1
<i>Type of work preferred—</i>									
Full-time	11.4	*	14.6	25.1	115.3	140.4	67.5	87.5	155.0
Part-time	11.7	4.1	15.8	65.1	439.3	504.4	95.5	424.6	520.2
No preference	*	*	*	10.0	23.8	33.8	9.5	25.1	34.6
<i>Whether looked for work in the last 12 months(b)—</i>									
Had looked for work	23.6	7.6	31.1	34.3	120.2	154.5	57.4	128.3	185.6
Less than 5 weeks ago	23.6	7.6	31.1	9.3	31.5	40.8	24.2	47.7	71.9
5 and less than 8 weeks ago	10.7	37.2	47.9	15.8	32.0	47.9
8 and less than 13 weeks ago	6.4	22.7	29.0	8.0	21.0	29.0
13 to 52 weeks ago	7.9	28.9	36.8	9.4	27.4	36.8
Had not looked for work	65.9	458.3	524.2	115.2	409.0	524.2
<i>Time since last job(c)—</i>									
Had had a job	20.6	6.2	26.7	92.3	483.2	575.5	127.4	474.8	602.2
Under 12 months	13.0	*	15.4	16.1	138.3	154.5	62.2	107.6	169.9
Under 6 months	9.8	*	11.7	7.8	102.9	110.7	49.2	73.2	122.4
6 and under 12 months	*	*	*	8.3	35.5	43.8	13.0	34.5	47.5
1 and under 3 years	*	*	4.5	16.5	97.2	113.7	25.0	93.2	118.2
3 and under 5 years	*	*	*	15.2	61.9	77.1	16.3	62.7	79.0
5 and under 10 years	*	*	5.8	19.2	96.3	115.5	16.8	102.6	119.4
10 and under 20 years	*	*	*	16.8	71.3	88.1	6.3	82.5	88.8
20 years or more	*	*	*	8.4	18.1	26.6	*	26.1	26.8
Had never had a job	*	*	4.4	7.9	94.4	102.2	45.0	61.7	106.7
<i>Reason for ceasing last job(c)—</i>									
Had had a job	20.6	6.2	26.7	92.3	483.2	575.5	127.4	474.8	602.2
Job loser	9.3	*	11.9	38.5	141.5	180.0	56.1	135.9	192.0
Retrenched	4.0	*	5.1	20.2	49.5	69.7	21.2	53.5	74.8
Job was temporary or seasonal and did not leave to return to studies	*	*	*	8.2	39.7	47.9	10.1	40.9	51.0
Own ill health or injury	*	*	*	7.4	47.4	54.8	21.9	36.2	58.1
Business closed down for economic reasons	*	*	*	*	5.0	7.6	*	5.3	8.1
Job leaver	11.2	*	14.8	53.8	329.2	383.0	67.8	330.0	397.8
Unsatisfactory work arrangements	*	*	*	6.2	25.7	31.9	10.3	24.6	34.8
Job was temporary or seasonal and left to return to studies	*	*	*	*	10.9	10.9	7.0	4.6	11.6
Retired/didn't want to work any longer	*	*	*	12.7	28.7	41.4	21.0	20.6	41.6
Returned to studies	*	*	*	*	20.6	21.7	14.7	8.3	23.0
To get married	*	*	*	5.3	31.4	36.7	*	37.7	37.7
Pregnancy/to have children	*	*	*	11.2	120.2	131.4	*	134.9	135.2
To look after family, house or someone else	*	*	*	5.1	32.1	37.3	*	36.5	38.2
To have holiday/to move house/spouse transferred	*	*	*	8.3	40.8	49.1	6.4	45.4	51.8
Business closed down for other reasons	*	*	*	*	8.2	9.3	*	6.6	10.0
Other	*	*	*	*	10.7	13.3	*	10.9	14.0
Not asked(d)	12.4	12.4	*	8.9	12.4
Had never had a job	*	*	4.4	7.9	94.4	102.2	45.0	61.7	106.7
Total	23.6	7.6	31.1	100.2	578.5	678.7	172.6	537.3	709.8

(a) Excludes persons aged 20-24 attending school. (b) Persons who had left a job in the last twelve months were only asked whether they had looked for work since that job. (c) Excludes unpaid voluntary workers. (d) Persons who had a job but, up to the end of the survey week, had been away from work without pay for four weeks or longer and had not been actively looking for work.

TABLE 15. PERSONS NOT IN THE LABOUR FORCE WHO WANTED TO WORK BUT WERE NOT ACTIVELY LOOKING FOR WORK AND WERE AVAILABLE TO START WORK WITHIN FOUR WEEKS: MAIN REASON FOR NOT ACTIVELY LOOKING FOR WORK AND AGE, MARCH 1987
(' 000)

Main reason for not actively looking for work	Age group								Total
	15-19	20-24	25-34	35-44	45-54	55-59	60-64	65 and over	
MALES									
Had a job to go to	*	*	*	*	*	*	*	*	4.9
Personal reasons(a)	55.8	9.2	7.0	7.7	7.2	5.9	7.5	10.9	111.1
Own ill health, physical disability	*	*	*	5.4	5.0	*	6.4	*	26.9
Attending an educational institution	54.2	5.5	*	*	*	*	*	*	61.8
Had no need to work	*	*	*	*	*	*	6.3	*	10.8
Welfare payments/pension may be affected	*	*	*	*	*	*	4.5	*	6.4
Moved house/holidays	*	*	*	*	*	*	*	*	4.4
Family reasons	*	*	*	*	*	*	*	*	*
Discouraged jobseekers(a)	4.4	*	*	*	*	*	5.7	8.4	25.4
Considered too young or too old by employers	*	*	*	*	*	*	*	7.1	13.2
No jobs in locality or line of work	*	*	*	*	*	*	*	*	7.5
No jobs in suitable hours	*	*	*	*	*	*	*	*	*
Other reasons	*	*	*	*	*	*	*	*	9.7
Did not know	*	*	*	*	*	*	*	*	*
Not asked(b)	*	*	*	*	*	*	*	*	*
Total(a)	63.9	12.6	13.9	12.5	12.4	10.0	15.4	19.7	160.4
FEMALES									
Had a job to go to	*	*	*	*	*	*	*	*	6.2
Personal reasons	52.1	9.5	20.5	29.4	23.2	9.8	5.1	5.0	154.6
Own ill health, physical disability, pregnancy	*	*	7.9	8.9	10.0	*	*	*	36.8
Attending an educational institution	49.4	*	4.8	*	*	*	*	*	58.0
Had no need to work	*	*	4.5	8.8	7.4	*	*	*	28.1
Give others a chance	*	*	*	*	*	*	*	*	4.9
Welfare payments/pension may be affected	*	*	6.6	*	5.2	*	*	*	15.6
Moved house/holidays	*	*	6.4	*	*	*	*	*	11.2
Family reasons	6.7	27.5	114.6	60.5	19.2	4.9	*	*	235.5
Ill health of other than self	*	*	5.9	*	5.1	*	*	*	11.7
Unable to find suitable childcare	*	10.8	40.0	13.4	*	*	*	*	67.6
Children too young/preferred to look after children	4.5	15.6	64.6	27.4	4.2	*	*	*	116.1
Other family considerations	*	*	7.7	16.1	10.2	*	*	*	40.0
Discouraged jobseekers	5.4	*	9.8	20.6	16.5	9.5	6.1	6.8	74.8
Considered too young or too old by employers	*	*	*	*	6.9	5.6	5.4	6.4	27.2
Difficulties with language or ethnic background	*	*	*	*	*	*	*	*	*
Lacked necessary schooling, training, skills or experience	*	*	*	5.3	*	*	*	*	10.4
No jobs in locality or line of work	*	*	5.2	8.0	5.9	*	*	*	24.1
No jobs at all	*	*	*	4.0	*	*	*	*	9.8
No jobs in suitable hours	*	*	4.1	4.0	*	*	*	*	10.7
Other reasons	*	*	5.3	5.6	4.5	*	*	*	19.4
Did not know	*	*	5.0	*	*	*	*	*	8.2
Not asked(b)	*	*	4.7	*	*	*	*	*	8.9
Total	65.7	43.4	162.7	126.5	66.5	26.1	13.0	14.3	518.2
PERSONS									
Had a job to go to	*	*	4.1	*	*	*	*	*	11.1
Personal reasons	107.9	18.6	27.5	37.1	30.4	15.7	12.7	15.9	265.7
Own ill health, physical disability, pregnancy	*	4.6	11.5	14.3	15.0	7.3	4.8	4.2	63.7
Attending an educational institution	103.6	9.2	6.7	*	*	*	*	*	119.8
Had no need to work	*	*	4.9	9.1	8.5	4.8	*	5.6	38.9
Give others a chance	*	*	*	*	*	*	*	*	5.5
Welfare payments/pension may be affected	*	*	4.2	4.1	5.6	*	*	4.6	22.1
Moved house/holidays	4.1	*	*	4.6	*	*	*	*	15.6
Family reasons	6.8	27.8	115.0	61.0	20.4	5.0	*	*	239.3
Ill health of other than self	*	*	5.9	*	4.1	*	*	*	13.1
Unable to find suitable childcare	*	10.8	40.4	13.5	*	*	*	*	68.2
Children too young/preferred to look after children	4.5	15.9	64.6	27.6	4.7	*	*	*	117.2
Other family considerations	*	*	7.7	16.3	10.5	*	*	*	40.8
Discouraged jobseekers	6.7	*	11.7	21.8	18.6	11.3	11.9	15.2	100.2
Considered too young or too old by employers	*	*	*	*	8.2	6.2	9.1	13.5	40.4
Difficulties with language or ethnic background	*	*	*	*	*	*	*	*	4.2
Lacked necessary schooling, training, skills or experience	*	*	*	5.3	*	*	*	*	12.5
No jobs in locality or line of work	4.4	*	6.1	8.9	6.5	*	*	*	31.5
No jobs at all	*	*	*	4.0	*	*	*	*	11.6
No jobs in suitable hours	*	*	4.1	4.0	*	*	*	*	11.8
Other reasons	5.7	*	7.3	7.0	6.6	*	*	*	29.1
Did not know	*	*	5.1	*	*	*	*	*	9.0
Not asked(b)	*	*	5.1	*	*	*	*	*	12.4
Total	129.7	56.1	176.5	139.0	78.9	36.1	28.4	34.0	678.7

(a) Includes reasons not shown separately. (b) Persons who had a job but, up to the end of the survey week, had been away from work without pay for four weeks or longer and had not been actively looking for work.

TABLE 16. PERSONS NOT IN THE LABOUR FORCE WHO WANTED TO WORK BUT WERE NOT ACTIVELY LOOKING FOR WORK AND WERE AVAILABLE TO START WORK WITHIN FOUR WEEKS : WHETHER LOOKED FOR WORK IN THE LAST TWELVE MONTHS AND INTENTION TO LOOK FOR WORK IN THE NEXT TWELVE MONTHS, MARCH 1987 (' 000)

Whether looked for work in the last twelve months(a)	Intention to look for work in the next twelve months					Total
	Intended to look	Might look	Did not intend to look	Did not know	Not asked(b)	
MALES						
Had looked for work	33.3	4.9	*	*	*	45.3
Less than 5 weeks ago	9.8	*	*	*	*	12.1
5 and less than 8 weeks ago	11.1	*	*	*	*	15.8
8 and less than 13 weeks ago	5.3	*	*	*	*	8.0
13 to 52 weeks ago	7.2	*	*	*	*	9.4
Had not looked for work	50.8	17.5	38.0	*	5.7	115.2
Total	84.1	22.5	41.5	4.0	8.5	160.4
FEMALES						
Had looked for work	81.2	14.8	8.7	*	*	109.2
Less than 5 weeks ago	24.4	} 5.8 {	*	*	*	28.7
5 and less than 8 weeks ago	26.1		*	*	*	32.0
8 and less than 13 weeks ago	15.6	*	*	*	21.0	
13 to 52 weeks ago	15.1	6.2	4.2	*	*	27.4
Had not looked for work	120.6	86.9	164.0	23.9	13.6	409.0
Total	201.8	101.7	172.7	27.0	15.1	518.2
PERSONS						
Had looked for work	114.5	19.7	12.1	*	4.2	154.5
Less than 5 weeks ago	34.1	4.4	*	*	*	40.8
5 and less than 8 weeks ago	37.2	*	4.0	*	*	47.9
8 and less than 13 weeks ago	20.9	4.0	*	*	*	29.0
13 to 52 weeks ago	22.3	7.4	4.7	*	*	36.8
Had not looked for work	171.3	104.4	202.0	27.1	19.3	524.2
Total	285.9	124.2	214.1	31.0	23.5	678.7

(a) Persons who had left a job in the last twelve months were only asked whether they had looked for work since that job. (b) Comprises persons who had a job to go to and persons who had a job but, up to the end of the survey week, had been away from work without pay for four weeks or longer and had not been actively looking for work.

TABLE 17. PERSONS NOT IN THE LABOUR FORCE WHO WANTED TO WORK BUT WERE NOT ACTIVELY LOOKING FOR WORK AND WERE AVAILABLE TO START WORK WITHIN FOUR WEEKS : TIME SINCE LAST JOB AND INTENTION TO LOOK FOR WORK IN THE NEXT TWELVE MONTHS, MARCH 1987 (' 000)

Time since last job	Intention to look for work in the next twelve months					Total
	Intended to look	Might look	Did not intend to look	Did not know	Not asked(a)	
MALES						
Had had a job	56.3	16.1	33.3	*	8.5	117.2
Under 12 months	34.1	4.9	6.5	*	8.3	54.5
Under 6 months	28.2	*	*	*	7.6	42.9
6 and under 12 months	5.8	*	*	*	*	11.6
1 and under 3 years	11.5	} 6.5 {	7.0	*	*	23.3
3 and under 5 years	5.7		6.6	*	*	15.8
5 and under 10 years	} 4.8 {	4.1	8.0	*	*	16.6
10 and under 20 years		*	4.7	*	*	6.3
20 years or more	*	*	*	*	*	*
Had never had a job	27.6	6.3	8.2	*	*	43.0
Total	84.1	22.5	41.5	4.0	8.5	160.4
FEMALES						
Had had a job	169.9	92.0	157.6	23.9	14.8	458.2
Under 12 months	56.4	13.8	13.7	*	13.2	99.9
Under 6 months	39.5	7.6	6.7	*	12.0	67.7
6 and under 12 months	16.8	6.2	7.1	*	*	32.2
1 and under 3 years	39.6	20.3	25.1	4.7	*	90.4
3 and under 5 years	23.0	11.9	22.9	*	*	61.4
5 and under 10 years	26.3	20.5	46.8	4.9	*	98.9
10 and under 20 years	20.5	20.4	35.7	5.0	*	81.7
20 years or more	4.2	5.2	13.4	*	*	25.8
Had never had a job	31.4	9.6	14.9	*	*	59.3
Total	201.8	101.7	172.7	27.0	15.1	518.2
PERSONS						
Had had a job	226.2	108.1	190.9	27.0	23.3	575.5
Under 12 months	90.4	18.7	20.2	*	21.5	154.5
Under 6 months	67.8	11.2	9.8	*	19.5	110.7
6 and under 12 months	22.6	7.5	10.4	*	*	43.8
1 and under 3 years	51.1	24.0	32.2	5.6	*	113.7
3 and under 5 years	28.7	14.7	29.5	4.0	*	77.1
5 and under 10 years	30.2	24.6	54.7	5.6	*	115.5
10 and under 20 years	21.4	21.1	40.4	5.0	*	88.1
20 years or more	4.4	5.2	13.9	*	*	26.6
Had never had a job	59.0	15.9	23.0	4.0	*	102.2
Total(b)	285.9	124.2	214.1	31.0	23.5	678.7

(a) Comprises persons who had a job to go to and persons who had a job but, up to the end of the survey week, had been away from work without pay for four weeks or longer and had not been actively looking for work. (b) Includes unpaid voluntary workers.

TABLE 18. PERSONS NOT IN THE LABOUR FORCE WHO WERE DISCOURAGED JOBSEEKERS: WHETHER LOOKED FOR WORK IN THE LAST TWELVE MONTHS, TIME SINCE LAST JOB AND INTENTION TO LOOK FOR WORK IN THE NEXT TWELVE MONTHS, MARCH 1987
(' 000)

	Intention to look for work in the next twelve months			Total(a)
	Intended to look	Might look	Did not intend to look	
<i>Whether looked for work in the last twelve months(b)–</i>				
Had looked for work	27.3	4.9	*	34.3
Less than 5 weeks ago	8.0	*	*	9.3
5 and less than 8 weeks ago	8.8	*	*	10.7
8 and less than 13 weeks ago	5.3	*	*	6.4
13 to 52 weeks ago	5.2	*	*	7.9
Had not looked for work	17.2	12.0	33.9	65.9
<i>Time since last job(c)–</i>				
Had had a job	39.4	16.3	32.8	92.3
Under 12 months	11.3	*	*	16.1
Under 6 months	6.3	*	*	7.8
6 and under 12 months	5.1	*	*	8.3
1 and under 3 years	8.3	*	4.4	16.5
3 and under 5 years	7.2	} 6.0 {	4.5	15.2
5 and under 10 years	6.6		8.5	19.2
10 and under 20 years	5.1	} 4.5 {	8.4	16.8
20 years or more	*		5.1	8.4
Had never had a job	5.1	*	*	7.9
Total	44.5	16.9	34.8	100.2

(a) Includes did not know. (b) Persons who had left a job in the last twelve months were only asked whether they had looked for work since that job. (c) Excludes unpaid voluntary workers.

TABLE 19. PERSONS NOT IN THE LABOUR FORCE WHO WANTED TO WORK BUT WERE NOT ACTIVELY LOOKING FOR WORK AND WERE NOT AVAILABLE TO START WORK WITHIN FOUR WEEKS: REASON NOT AVAILABLE TO START WORK WITHIN FOUR WEEKS, INTENTION TO LOOK FOR WORK IN THE NEXT TWELVE MONTHS AND TYPE OF WORK PREFERRED, MARCH 1987
(' 000)

Reason not available to start work within four weeks	Intention to look for work in the next twelve months					Type of work preferred			Total
	Intended to look	Might look	Did not intend to look	Did not know	Not asked(a)	Full-time	Part-time preference	No	
Personal reasons	42.4	24.3	44.7	6.9	6.8	53.4	63.7	8.0	125.0
Own ill health or injury, physical disability, or pregnancy	17.0	16.0	30.4	5.2	5.8	31.7	35.6	7.2	74.5
Studying	20.0	6.0	11.0	*	*	19.4	18.9	*	39.1
At school	11.6	4.3	8.0	*	*	11.5	13.0	*	25.3
Other educational institution	8.4	*	*	*	*	7.8	5.9	*	13.7
Moved house/holidays	5.4	*	*	*	*	*	9.1	*	11.5
Family reasons	15.7	12.2	52.3	*	8.0	14.2	72.4	4.6	91.2
Ill health of other than self	*	*	6.9	*	*	*	8.3	*	12.3
Unable to find suitable childcare	*	*	6.9	*	*	*	8.4	*	11.2
Children too young/preferred to look after children	11.5	9.1	38.5	*	2.0	9.2	55.7	*	67.7
Other reasons	*	*	10.7	*	*	6.1	11.9	*	19.3
Total	62.1	39.5	107.7	10.3	16.0	73.7	147.9	13.9	235.5
Males	18.6	12.8	20.1	*	*	32.0	19.3	5.4	56.7
Females	43.5	26.7	87.6	7.5	13.6	41.7	128.6	8.6	178.9

(a) Persons who had a job but, up to the end of the survey week, had been away from work without pay for four weeks or longer and had not been actively looking for work.

TABLE 20. PERSONS NOT IN THE LABOUR FORCE WHO WANTED TO WORK BUT WERE NOT ACTIVELY LOOKING FOR WORK AND WERE NOT AVAILABLE TO START WORK WITHIN FOUR WEEKS: REASON NOT AVAILABLE TO START WORK WITHIN FOUR WEEKS AND AGE, MARCH 1987
(' 000)

Reason not available to start work within four weeks	Age group								Total
	15-19	20-24	25-34	35-44	45-54	55-59	60-64	65 and over	
Personal reasons	30.7	12.2	26.6	20.4	16.8	6.9	6.1	5.5	125.0
Own ill health or injury, physical disability, or pregnancy	*	6.7	20.3	15.3	14.3	6.3	5.2	4.1	74.5
Studying	26.9	4.7	4.5	*	*	*	*	*	39.1
At school	22.2	*	*	*	*	*	*	*	25.3
Other educational institution	4.7	*	4.8	*	*	*	*	*	13.7
Moved house/holidays	*	*	4.9	*	*	*	*	*	11.5
Family reasons	*	12.4	52.5	16.4	4.6	*	*	*	91.2
Ill health of other than self	*	*	4.2	*	5.0	*	*	*	12.3
Unable to find suitable childcare	*	*	8.8	*	*	*	*	*	11.2
Children too young/preferred to look after children	*	10.6	42.8	12.3	*	*	*	*	67.7
Other reasons	*	*	4.2	5.0	5.2	*	*	*	19.3
Total	33.0	25.8	83.3	41.8	24.9	10.1	9.2	7.6	235.5
Males	15.7	4.3	7.1	6.9	9.5	4.7	4.7	*	56.7
Females	17.3	21.5	76.1	34.9	15.4	5.4	4.5	*	178.9

ADDITIONAL TABLES

The following is a list of additional tables of results from the survey which are available to users on request. These tables show a selection of estimates on an Australia-wide basis. Tables disaggregated by State/Territory and other tables may also be available. Most tables are dissected by sex.

Persons not in the labour force—

Labour force status—

- A1 Age and family status
- A2 Family status and main activity
- A3 Birthplace and year of arrival
- A4 Whether looked for work in the last twelve months and age

Age—

- A5 Occupation in last job
- A6 Reason for ceasing last job and whether wanted to work
- A7 Main activity and family status
- A8 Full-time or part-time status in last job
- A9 Whether looked for work in the last twelve months and whether wanted to work

Family status—

- A10 Main activity and whether looked for work in the last twelve months
- A11 Time since last job
- A12 Occupation in last job

Persons who wanted to work—

Family status—

- A13 Age and intention to look for work in the next twelve months
- A14 Type of work preferred
- A15 Marital status, and birthplace and year of arrival

Persons with marginal attachment to the labour force—

Main reason for not actively looking for work—

- A16 Age and time since last job
- A17 Birthplace and year of arrival
- A18 Marital status

Intention to look for work in the next twelve months—

- A19 Main activity and age
- A20 Marital status

Persons who wanted to work but were not actively looking for work and were available to start work within four weeks—

All reasons for not actively looking for work—

- A21 Age
- A22 Family status

Main reason for not actively looking for work—

- A23 Family status and type of work preferred
- A24 Intention to look for work in the next twelve months and age
- A25 Birthplace and year of arrival

TECHNICAL NOTE

Estimation procedure

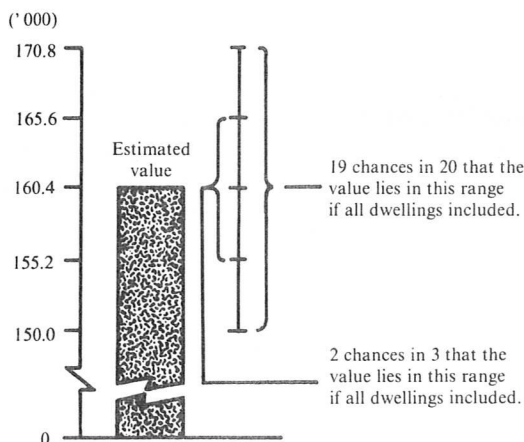
The estimates are derived from the population survey by use of a ratio estimation procedure, which ensures that the estimates conform to an independently estimated distribution of the population for each capital city and remainder of State by age and sex, rather than to the corresponding distribution within the sample itself.

Reliability of the estimates

2. Since the estimates in this publication are based on information obtained from occupants of a sample of dwellings, they are subject to sampling variability: that is, they may differ from those that would have been produced if all dwellings had been included in the survey. One measure of the likely difference is given by the *standard error*, which indicates the extent to which an estimate might have varied by chance because only a sample of dwellings was included. There are about two chances in three that a sample estimate will differ by less than one standard error from the number that would have been obtained if all dwellings had been included, and about nineteen chances in twenty that the difference will be less than two standard errors. Another measure of the likely difference is the *relative standard error*, which is obtained by expressing the standard error as a percentage of the estimate.

3. Space does not allow for the separate indication of the standard errors of all estimates in this publication. A table of standard errors for general application is given on the following page. Since they are averages based on calculations for a limited number of past surveys over a wide range of labour force characteristics these figures will not give a precise measure of the standard error of a particular estimate but they will provide an indication of its magnitude.

4. An example of the calculation and the use of standard errors in relation to estimates of persons is as follows. Table 15 shows the estimated number of males in Australia who were not in the labour force and who wanted to work but were not actively looking for work and were available to start work within four weeks was 160,400. Since this estimate is between 100,000 and 200,000 the standard error for Australia will be between 4,400 and 5,800 in the standard error table and can be approximated as 5,200 (rounded to the nearest 100). Therefore, there are about two chances in three that the value that would have been produced if all dwellings had been included in the survey will fall in the range 155,200 to 165,600 and about nineteen chances in twenty that the value will fall within the range 150,000 to 170,800. This example is illustrated in the following diagram.



5. As can be seen from the standard error table, *the smaller the estimate the higher is the relative standard error*. Very small estimates are thus subject to such high standard errors (relative to the size of the estimate) as to detract seriously from their value for most reasonable uses. In the tables in this publication, estimates less than the lowest levels shown in the standard error table have not been published. Although, in some cases, estimates for these small components can in some cases be derived by subtraction, they should not be regarded as reliable.

6. Proportions and percentages formed from the ratio of two estimates are also subject to sampling errors. The size of the error depends on the accuracy of both the numerator and the denominator. The formula for the relative standard error (RSE) of a proportion is:

$$RSE (x/y) = \sqrt{[RSE (x)]^2 + [RSE (y)]^2}$$

7. Considering the example from paragraph 4 above, of the 160,400 males who wanted to work but were not actively looking for work and were available to start work within four weeks only 12,600 or 7.9 per cent were aged between 20 and 24. The standard error of 12,600 is approximately 1,700 so the relative standard error is 13.5 per cent. The relative standard error for 160,400 is 3.3 per cent. Applying the above formula, the relative standard error of the proportion is $\sqrt{(13.5)^2 - (3.3)^2}$ or 13.1 per cent, giving a standard error for the proportion (7.9 per cent) of 1.0 percentage points. Therefore, there are about two chances in three that the proportion of males who were aged between 20 and 24 and who wanted to work but were not actively looking for work and were available to start work within four weeks was between 6.9 per cent and 8.9 per cent and nineteen chances in twenty the proportion was within the range 5.9 per cent to 9.9 per cent.

8. Published estimates may also be used to calculate the difference between two survey estimates (of numbers or percentages). Such an estimate is subject to sampling error. The sampling error of the difference between two estimates depends on their standard errors and the relationship (correlation) between them. An approximate standard error (SE) of the difference between two estimates (x-y) may be calculated by the following formula:

$$SE (x-y) = \sqrt{[SE (x)]^2 + [SE (y)]^2}$$

While this formula will only be exact for differences between separate and uncorrelated characteristics or sub-populations it is expected to provide a good approximation for all differences likely to be of interest in this publication.

9. The imprecision due to sampling variability, which is measured by the standard error, should not be confused with inaccuracies that may occur because of imperfections in reporting by interviewers and respondents and errors made in coding and processing data. Inaccuracies of this kind are referred to as the *non-sampling error*, and they may occur in any enumeration, whether it be a full count or a sample. Every effort is made to reduce the non-sampling error to a minimum by careful design of questionnaires, intensive training and supervision of interviewers and efficient operating procedures.

